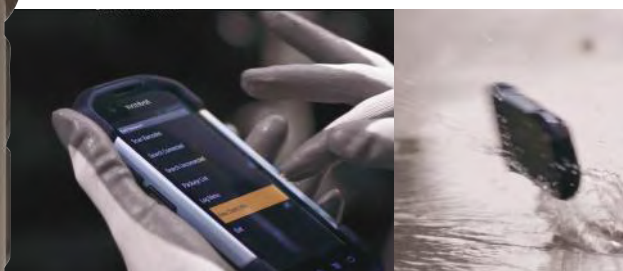




# TC70

## MOBILE COMPUTER



**YOUR FRONT LINE  
TO A SMARTER  
ENTERPRISE**



# THE RIGHT DEVICE MAKES ALL THE DIFFERENCE

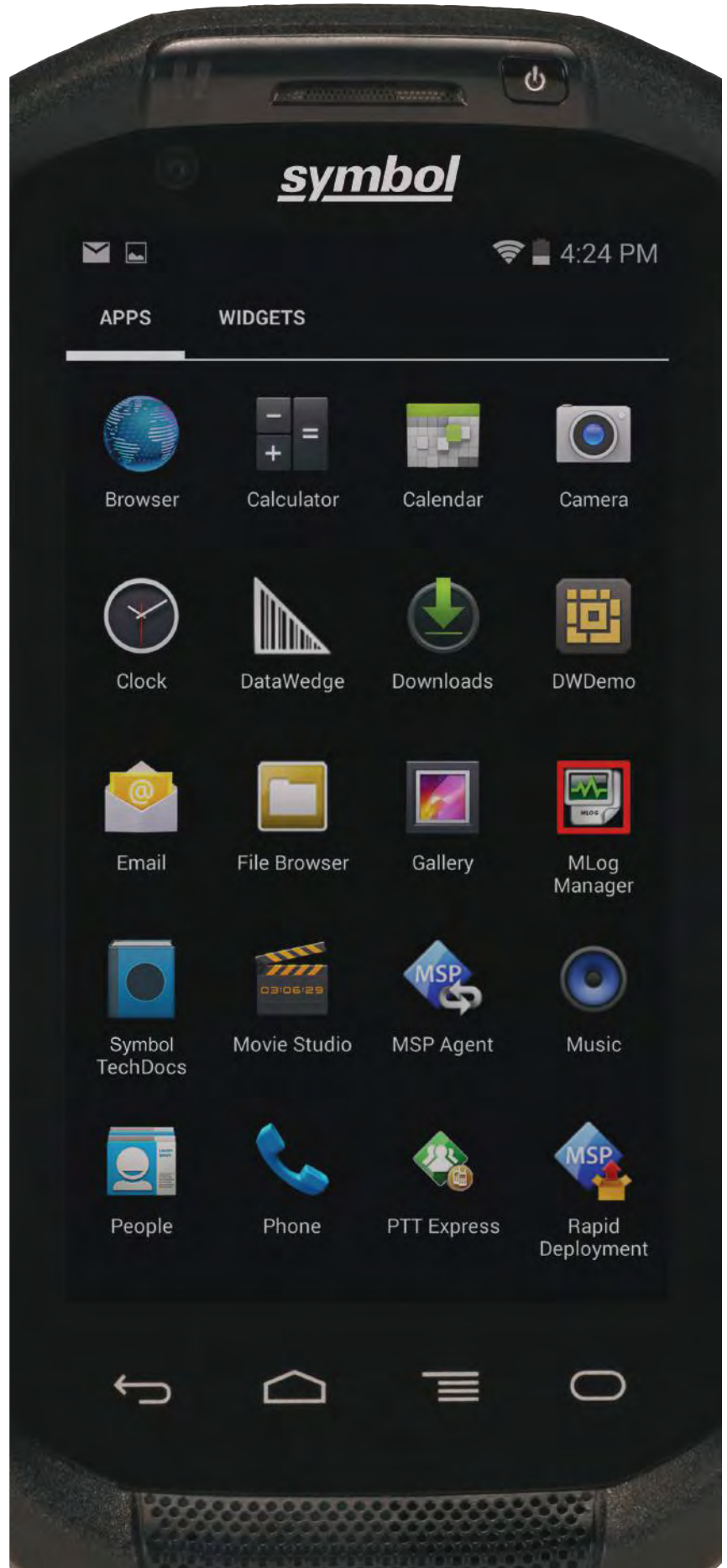
In today's world, it takes the best service to earn a sale and repeat business. In order for your front line workers to consistently deliver that level of service, they'll need to execute every task as quickly and efficiently as possible. With a mobile computer in hand, they can. But you need a business-grade device with enterprise-class durability and functionality — while your workers want a device that is every bit as refined and easy to use as their own personal smartphones and tablets.

## Introducing the TC70. The touch computer that has it all.

This professional grade Android™ device marries the intuitive and elegant smartphone experience with today's most advanced enterprise-class features. Your workers get everything they need to work smarter and faster, able to deliver the kind of service that will put your business a step above the competition. You get a rugged device built to last for years, with everything you need to streamline your workflows and maximize your return on investment — from world-class voice and data features to snap-on accessories that let you add new capabilities, when and where you need them.



**THE TC70**  
The right device for  
your workers. The  
right device for  
your business.



# WORLD-CLASS DATA CAPTURE

With our advanced data capture features, your workers can capture practically any type of information, more easily, faster and more accurately.

**Capture all the data you need to streamline your business processes**

ANY BAR CODE

SIGNATURES

HIGH RESOLUTION PHOTOS

HIGH RESOLUTION VIDEOS

VIDEO CALLS

NFC

## MAKE DATA CAPTURE EASIER THAN EVER WITH OUR ADVANCED FEATURES

### Lightning-fast bar code capture

Zebra-only patented PRZM technology, a megapixel sensor and advanced optics allow your workers to capture bar codes as fast as they can press the scan button.

### Capture bar codes in any condition with our advanced decode algorithms

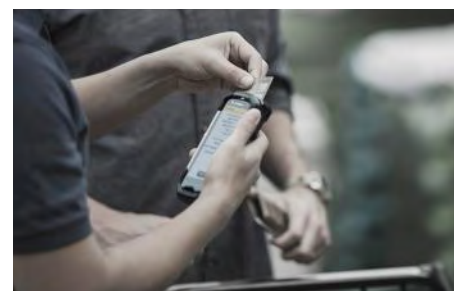
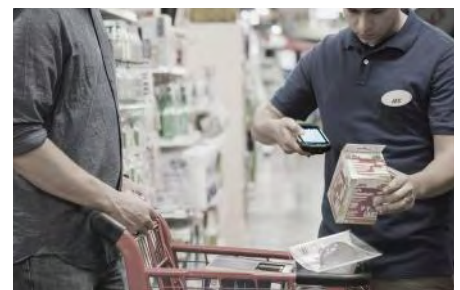
The retail store, warehouse and manufacturing floor can be tough on bar codes. With the TC70, workers can capture even dirty, scratched, smudged or poorly printed bar codes, eliminating the time and errors that can occur when bar code data is entered manually.

### An extraordinary working range and wide field of view for exceptional scanning flexibility

With a 50 percent increase in scanning range over our prior generation scanner, workers can capture bar codes at near contact to as far as 32 in./81 cm away — making it easy to take inventory and capture bar codes on items in carts in a retail store. Labels with multiple bar codes are no longer a challenge — workers can capture them all with one press of a scan button. And even large bar codes can be captured at close range.

### Let your workers change input modes on the fly

Throughout the day, your workers will perform different tasks. Our dual mode capacitive touch display allows workers to choose their preferred pair of data input modes — finger and stylus, or finger and gloved finger — and switch between the two modes on the fly. No need to change settings — and users can change pair selection at any time.



# BUSINESS TOUGH

The Symbol TC70 gives your workers an edge by combining the amazing ease of use of a consumer device with the no-nonsense durability, dependability and performance that enterprises demand.

## DROP TESTED

Everyday drops are inevitable — the TC70 is ready to handle them all with its 8 ft./2.4 m Military Standard drop rating or multiple 6 ft/1.8 m to concrete certification.

## TUMBLE TESTED

The TC70 easily handles the real-world tumbling that often happens after a device is dropped. Even after 2,000 consecutive 3.2 ft./1 m hits in our punishing tumble drum, the TC70 continues to operate dependably.

## IP67 SEALING

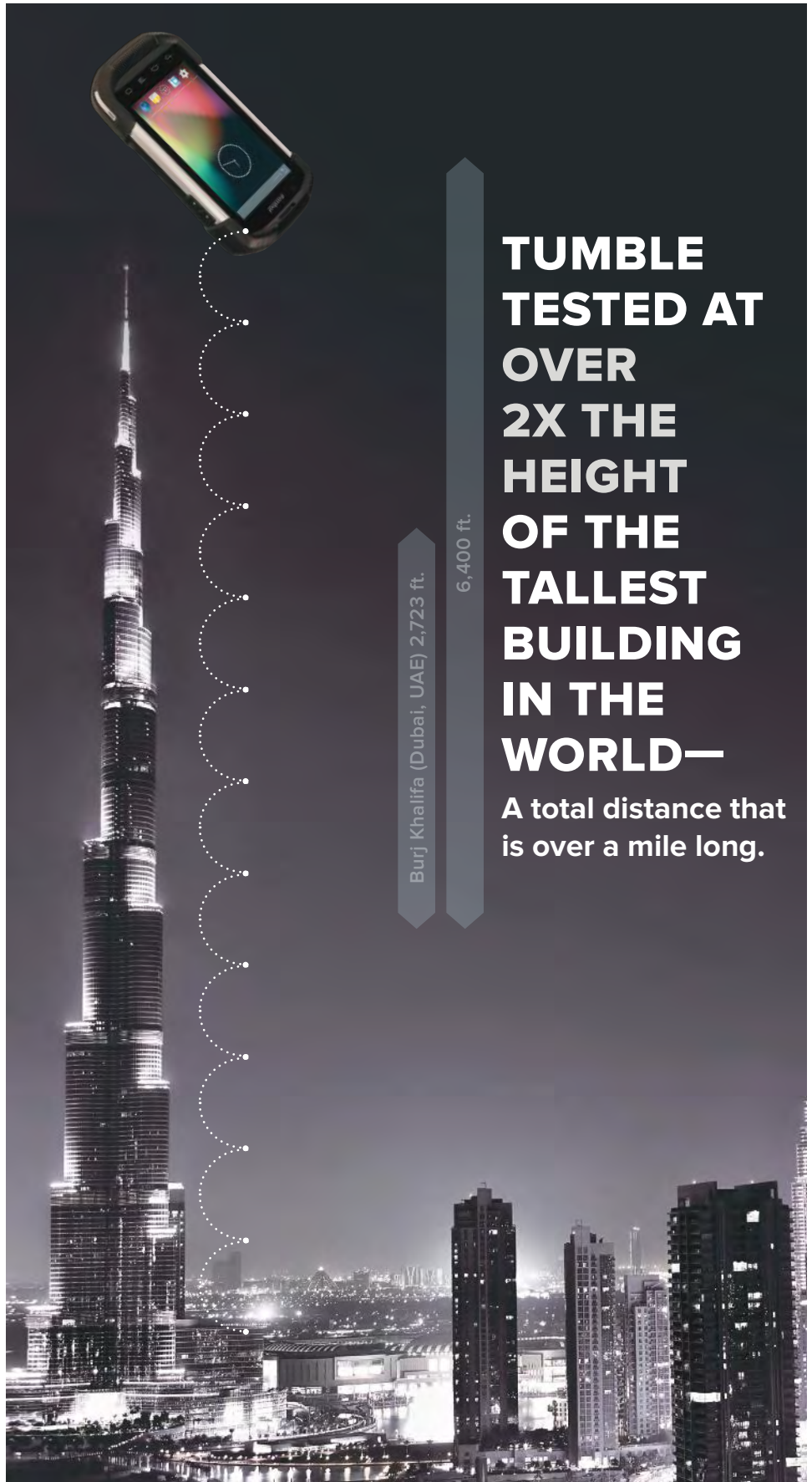
Dust, spilled beverages and even a drop in a bucket of water are no match for the TC70. The device is dust-tight and sealed to handle 30 minutes of complete immersion in water.

## CORNING® GORILLA® GLASS 2 TOUCH PANEL AND SCANNER EXIT WINDOW

Two of the most vulnerable components on any mobile device are fortified with one of the toughest materials available. With Gorilla Glass 2, our touch panel and scanner exit window can flex when bumped or dropped — instead of shattering or scratching.

## INDUSTRIAL GRADE CONNECTORS

With industrial grade connections, the TC70 is ready for years of insertions into cradles and connections to cables — unlike consumer grade connectors, which can wear out quickly.



Burj Khalifa (Dubai, UAE) 2,723 ft.

6,400 ft.

# TUMBLE TESTED AT OVER 2X THE HEIGHT OF THE TALLEST BUILDING IN THE WORLD—

A total distance that is over a mile long.

The TC70 continues to operate reliably, even after 2,000 3.2 ft./1 m consecutive tumbles — a total distance of 6,400 feet — more than twice the 2,723 ft. height of the Burj Khalifa tower in Dubai.

